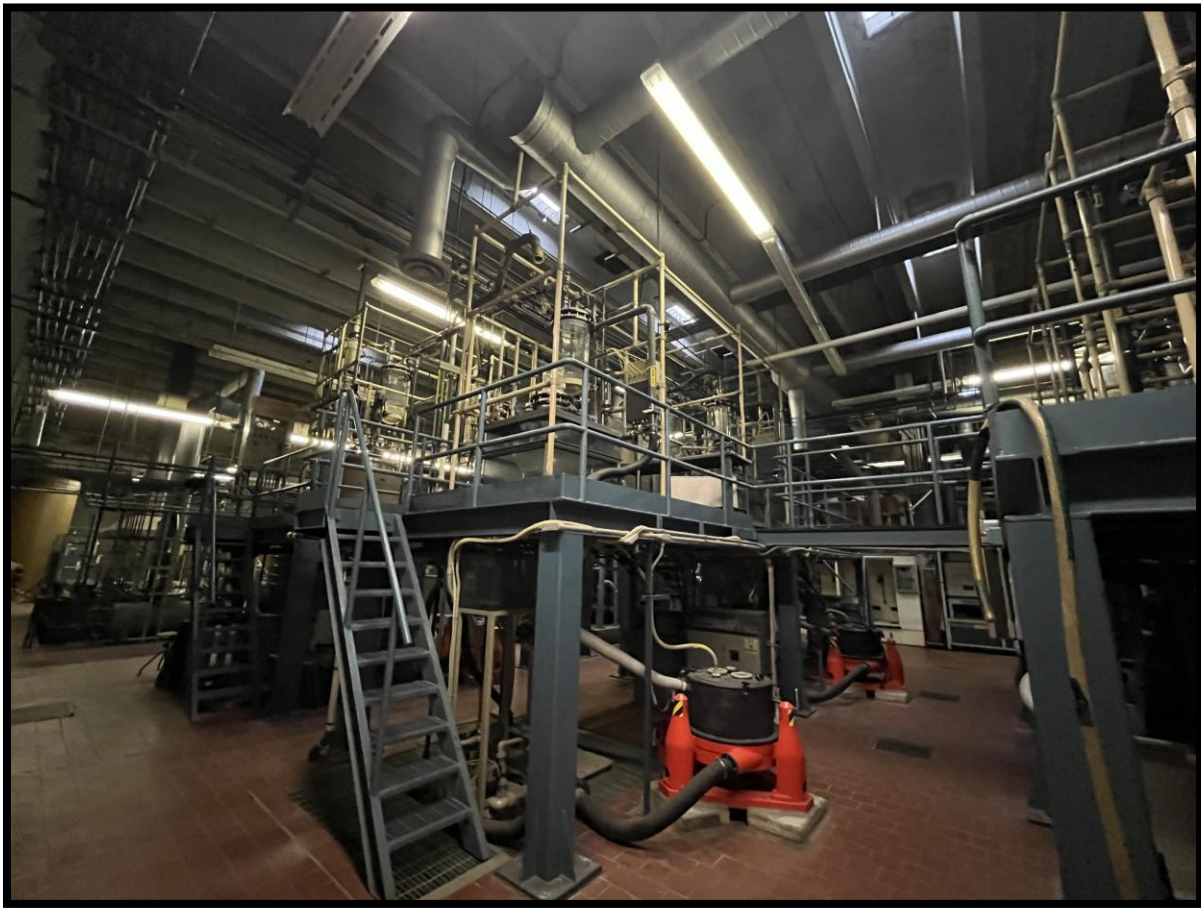


Complete Precious Metals Refinery System

Produce up to **100-150 Kilo of Gold**
& **250 Kilo of Silver per Day**

- Available For Sale -

All in New Condition - Never Put Into Production!



Contact Greg Erickson for More Details & Pricing
greg@goldmachinery.com | 401-724-3200

Overview Description of the Refinery:

The refinery is referred to as a precious metals refinery, having advanced automation technology that is capable of recovering a high content of precious metals. The electrodeposition modules are an example of the advanced technology used to recover silver in the form of a cathode metal and gold form of a sludge. The decomposition, extraction and filtration applied to the hydro-metallurgy are designed and manufactured with the wet and corrosive environment in mind. All units are built of anti-corrosive materials such as stainless steel, glass, plastics and other corrosion resistant materials.

The processing plant involved usage of noxious chemicals which are stored in corrosion resistant containers plumbed and fitted with the latest safety precautionary technology. The plant has a 10,000 M3/H filtration system with pumps, fans and two towers for air filtration as well as a 20,000 M3/H splash type scrubber for washing dust from the facility.

There is also a large stock of spare parts to assure minimum downtime for production. The plant has the potential of processing 100-150 kilo in gold and 250 kilo in silver per day. The gold can be processed to 99.99% pure.

This refinery plant is located in North America.



Description of the Plant:

Receiving Area:

- 30 kilo scale
- 2 anti-vibration tables

Laboratory:

- Crushing rolls
- Ball mill
- Atomic absorption unit
- Fisher lab equipment and electronic scales, sieves, etc
- 3 anti-vibration tables
- Instrumentation and equipment including: electric furnace for cupellation and smelting table for rolling and annealing

Materials Preparation and Quality Control:

- 100-200 kilo scale
- 1,000 kilo scale
- 1 anti-vibration table
- 1 hydraulic shear
- Barr mill for fine gold

Gold Electrolysis:

- 3 rectifiers
- 1 plant for electrolysis, gold refining including: cap for chemical treatments, two tanks consisting of three electrolytic refining plant for washing and treatment of fine gold cathodes cell for electrolytic refining of silver in ammonia solution, tower for neutralization of ammonia vapors

Silver Electrolysis:

- 5 rectifiers
- 1 plant for silver electrolytic refining including: 4 plants consisting of 5 cells and cell for recirculation, 3 suction plants, 5 exhausters, 3 centrifuges, post-centrifuge 3 plants for the extraction of silver in crystal and the extraction of gold and copper sediment
- 5 plants consisting of vacuum pumps and spare parts

Foundry:

- Incinerator
- Portable pyrometer
- Crucible furnace
- Demineralizer
- Cooling tanks
- Steel foundry tables
- Ladle, etc
- Smelting induction plant with two crucibles and medium frequency static generator, 100Kw
- Natural gas tilting furnace for cc 100 Morgan crucibles
- 2 natural fired furnaces for AC.20 Morgan crucibles

- Natural gas furnace for A-3 Morgan crucibles
- 5 tapered cast iron ingot moulds
- 75 ingot moulds for fine gold, fine silver and alloys
- 3 plants for picking bars
- Furnace for heating ingot moulds
- 2 containers for silver anodes and 24 ingot moulds
- 2 containers for gold anodes and 25 ingot moulds
- Ingot dogs for small and big crucibles
- 4 furnace and burners for pure silver grain

Dissolution Reactors:

- Racking for reactors
- 3 plants for chemical solution of gold alloys including: 3 quarts reactors for chemical solution of alloys, 3 centrifuges for chemical solution of gold alloy, 3 plants post-filtration, two quarts reactors for gold precipitation and separation. 2 plants for chemical solution by nitric acid, including: 2 stainless steel and quartz reactors, 2 plants post-filtration for chemical solution

Air Pollution Control:

- Filter 10,000 M3
- Corrosive gas suction and cleaning: 2 groups of towers
- Pumps and fans capacity M3/ 40,000
- Splash type scrubber for laying and washing dust with capacity of 20,000 M3H

Reagent Storage Area:

- Stainless steel storage tank
- F.R.P. Tanks
- 9 groups of pumps, valves to service the acid and reagent
- Storage tanks

Scrubbers:

- Plant for treatment and recovery of silver from nitric solution
- Plant for cleaning nitrous and acid gas coming from reactor for chemical solution

Treatment and Recovery:

- Four tanks for treatment and recovery of silver from nitric solution
- 5 cells for silver impoverishment and recovery
- 4 cells for copper treatment and recovery

Water Pollution Control:

- Discharge water treatment system for refinery waste

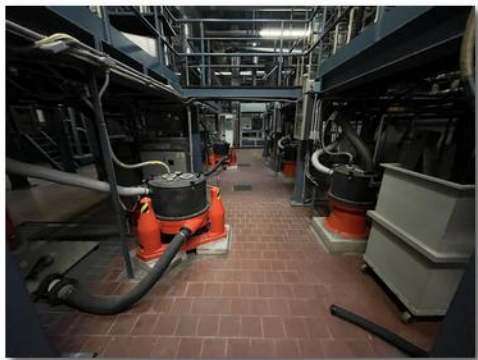
Contact Greg Erickson for More Details & Pricing
greg@goldmachinery.com
401-724-3200



IMG_1693



IMG_1694



IMG_1695



IMG_1696



IMG_1697



IMG_1698



IMG_1699



IMG_1700



IMG_1701



IMG_1702



IMG_1703



IMG_1704



IMG_1705



IMG_1706



IMG_1707



IMG_1708



IMG_1709



IMG_1710



IMG_1711



IMG_1712



IMG_1714



IMG_1715



IMG_1716



IMG_1717



IMG_1718



IMG_1719



IMG_1720



IMG_1721



IMG_1722



IMG_1723



IMG_1724



IMG_1725



IMG_1726



IMG_1727



IMG_1728



IMG_1729



IMG_1730



IMG_1731



IMG_1732



IMG_1733



IMG_1734



IMG_1735



IMG_1736



IMG_1737



IMG_1738



IMG_1757



IMG_1761



IMG_1762



IMG_1763



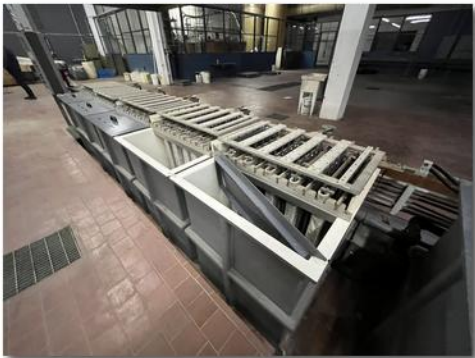
IMG_1764



IMG_1765



IMG_1766



IMG_1767



IMG_1768



IMG_1769



IMG_1770



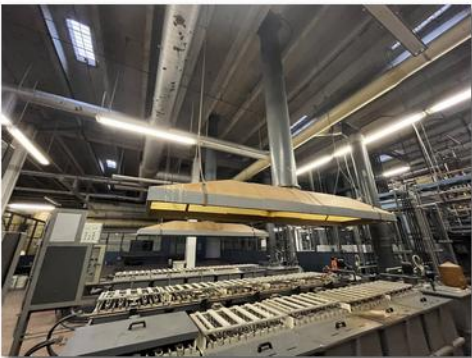
IMG_1771



IMG_1772



IMG_1773



IMG_1774



IMG_1775



IMG_1776



IMG_1777



IMG_1778



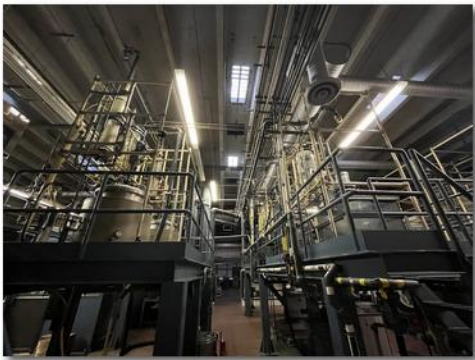
IMG_1779



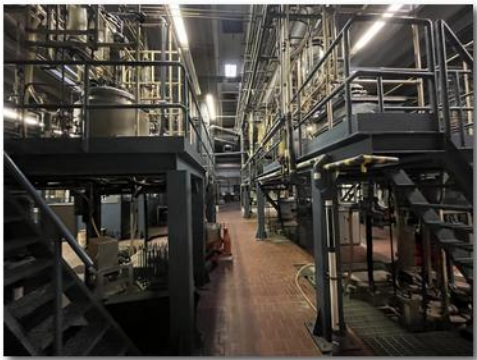
IMG_1780



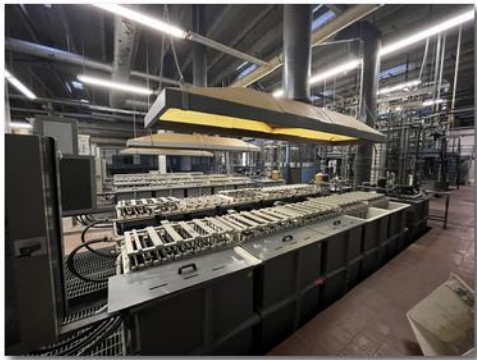
IMG_1781



IMG_1782



IMG_1783



IMG_1785



IMG_1786



IMG_1787



IMG_1788



IMG_1789



IMG_1790



IMG_1791



IMG_1792



IMG_1793



IMG_1794



IMG_1795



IMG_1796



IMG_1797



IMG_1798



IMG_1799



IMG_1800



IMG_1801



IMG_1804



IMG_1806



IMG_1807



IMG_1809



IMG_1810



IMG_1811



IMG_1812



IMG_1813



IMG_1814



IMG_1815



IMG_1816



IMG_1817



IMG_1819



IMG_1822



IMG_1824



IMG_1826



IMG_1827



IMG_1828



IMG_1829



IMG_1830



IMG_1831



IMG_1832



IMG_1833



IMG_1834



IMG_1835



IMG_1836



IMG_1957



IMG_1958



IMG_1959



IMG_1960



IMG_1961



IMG_1962



IMG_1963



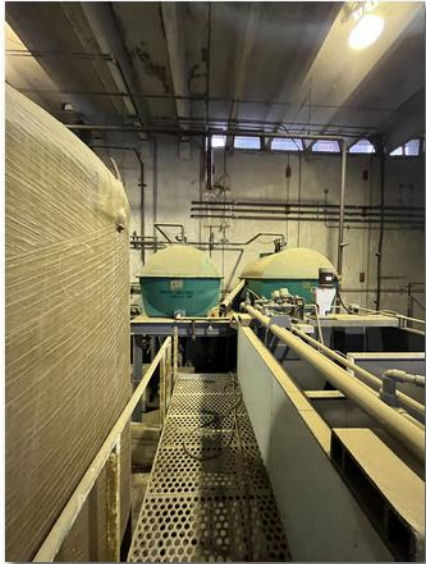
IMG_1964



IMG_1965



IMG_1966



IMG_1967



IMG_1968



IMG_1969



IMG_1970



IMG_1972



IMG_1973



IMG_1974



IMG_1975



IMG_1976



IMG_1977



IMG_1978



IMG_1979



IMG_1980



IMG_1981



IMG_1984



IMG_1985