

Broading - St Chris.

Stop line first (not deep)

Disc in chuck - top towards red -
loop against right side edge of opening
on chuck.

Lettering first - extend spring holder
to max. length - (use guide for lettering)

guide on plate - touching highest point -
then turn screw $\frac{1}{2}$ turn

Back Stop to "no-cut"

Spring in

lettering w/ barley cut (1st set of
teeth on right from smooth

Centered w/ sunray cut

Release back stop & tighten little handle

Engage wood handle to start cutting

Center - change to summary

Put plate in - ~~to~~ adjust to right

Put plate guide in another $\frac{1}{2}$ turn deeper

Crank ^{wood} back to "zero"

Adjust left wing nut to cut position
No guide

Increase tension on spring holder

Find center of disc by cranking
wood handle -
then adjust electric switch stop
to "click"

Sunray - WIDE guide

Tools

~~3~~

Markings on tool

Used for

3333

3° Left
right

Ctr. Dot.

Solid

Clean-up bevel
(^{move} tool slide to over brass pc)

9999

9° Left
right

Coarse corrugated,
#9-B wide line, scalloped

Red circles

15°

Gen'l purpose:
Sunray, BW, HB

Red dots

15°

Stop line (Deep cuts)

Blue circles

15°

2-line edge

Blue ^{diag} lines

narrow lines (#6-K) -
mostly on tie clips + m/c

SSSS

shields + stop lines on m/c
& Calendar

3 red lines
15° Down
30° Left
15° Right

beveled shield CV-1 + 25-KK

20°

Fine line sunray

3016 - / 1000

Florentine Tods

1° Right
~~2° Right~~
11° Down

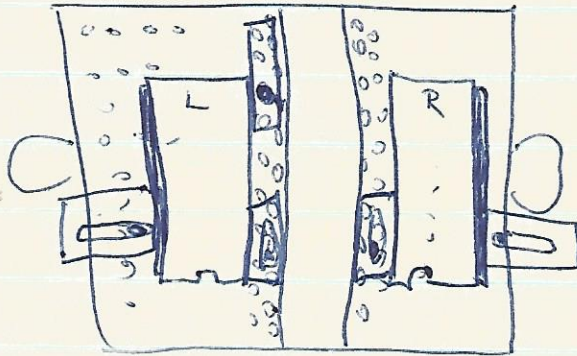


Sunray - WIDE guide

Sharpening -

Bottom Dot - Side marker

Belt Buckles



#2 Guide

24 m/NS - 5 Lines 5 Spaces 32 Notches
from Both Sides -

5 L ~~5~~ Spaces 5^{Lines} then scratch

Turn around - Sweep 5 times - lines to meet
then adjust w/ wheel

Hob Nail #1 Guide (wide)

15° - 1 turn - turnover - 30°

Sunray -

wide guide

Sunray - WIDE guide

Tools

~~3333~~

Markings on tool

Used for

3333

3° Left
Right

Ctr. Dot.

Solid

Clean-up bevel
(^{more} tool slide to over brass)

9999

9° Left
Right

Coarse corrugated,
#9-B wide line, scall

Red circles

15°

Gen'l purpose:
Sunray, BW, HB

Red dots

15°

Stop line (Dep cut)

Blue circles

15°

2-line edge

Blue ^{diag} lines

narrow lines (#6-K)
mostly on tie clips & m/

SSSS

shields & stop lines on m
& Calendar

3 red lines 15° Down
3° Left
3° Right

beveled shield CV-1 & 25-

Cutting tools -

3 Sunray - center ~~for~~
9 coarse corrugated

rt - deeper cut
left - shallower "

Corrugated & weave - wide guide
all other straight lines med.

B/W -

Narrow tie base - set @ 42 -

Start with 3 lines Silver
4 lines Gold

4/20

#3 tool - Dot for Sunray - swirl, etc
' 5 tool - Sharper than others
' 5 tool for Shields

Corrugated - wide guide
Slot = 15"
Fine Corrugated - 2x46 - tool w/rings - use BRAKE
Coarse Corrugated - 4x38 #9 tool

Barley - 38 Notches

Sunway - Set Support on 3rd Line up
from "MADE IN GERMANY"

~~5/4~~ 'S' (Sharp) tool - 9-A



cross lines - Sharp tool (3s)
use wide guide
tool w/ slanted lines - Narrow point

Circle line - set stops - up/down

8/16

Ovals -

Short side

Crank on Long side

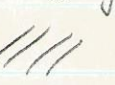
2 Line oval $\frac{1}{2}$ Turn

3 Line oval 1 Sweep 3:48[#]

Rods:

use small guide #3

move support 1 line from "Zisman" line

use  tool (narrow tool)

* line up rod - make small cut at bottom, then at top
cut each line twice

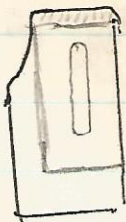
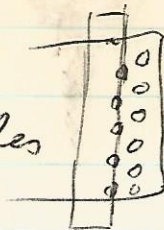
* or line up to T0 each point on holder

Setting Chuck for m/c:

set 1st plate on right -

so edge of second row of holes

is just showing



use this stop at top of m/c

for t/c: use 1 stop for right plate
& Tie clip stop

